



MODEL NUMBER	NAME	SEAT HEIGHT	ARM HEIGHT	WIDTH	DEPTH	HEIGHT
SA-1-O SA-1-M	Sabrina Chair Oak Maple			21"	21"	33"

FABRIC YARDS	LEATHER SQ FT	WEIGHT/ VOLUME	LIST PRICE
N/A	N/A		\$ 665

DESCRIPTION

The Sabrina Chair has a Steel Painted Frame (specify colour for legs) with a Plywood Shell available in Oak or Maple with a standard Natural Clear Finish.

For the complete line of Maple Wood Finishes and options, refer to page 12 in this specification guide.



For the complete line of Red Oak Wood Finishes and options, refer to page 12 in this specification guide.



SI-1	Sixty Chair	18 ¹ / ₈ "		16 ¹ / ₂ "	22 ¹ / ₄ "	32 ¹ / ₄ "
------	-------------	----------------------------------	--	----------------------------------	----------------------------------	----------------------------------

N/A	N/A	11.63 Lbs 12 Cu Ft	\$ 370
-----	-----	-----------------------	--------

The Sixty Chair has a Chromed or Lacquered Frame with a Natural Beechwood or Lacquered Seat and Back in a Natural Clear Finish.

WOODS & FINISHES:

Natural Maple
Standard



Natural Clear – M-NA

Maple Finishes
The following stains are available, add 10% to list



Honey Oak – M-HO



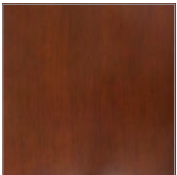
Castle Oak – M-CO



Richmond Cherry – M-RC



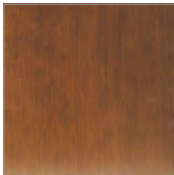
Mahogany – M-MA



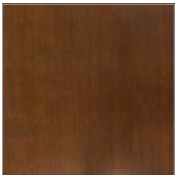
Victorian Cherry – M-VI



Java – M-JA



Wenge – M-WE



English Oak – M-EN

Natural Red Oak
Standard



Natural Clear – O-NA

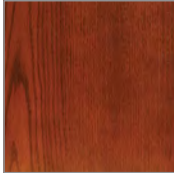
Red Oak Finishes
The following stains are available, add 10% to list



Castle Oak – O-CO



Honey Oak – O-HO



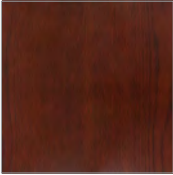
English Oak – O-EN



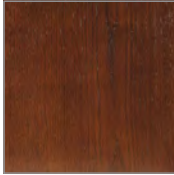
Victorian Cherry – O-VI



Mahogany – O-MA



Richmond Cherry – O-RC

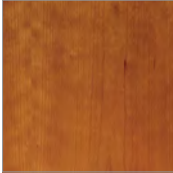


Java – O-JA



Wenge – O-WE

Natural Cherry
Add 20% to list



Natural Clear – C-NA

Cherry Finishes
The following stains are available, add 30% to list



Honey Oak – C-HO



Richmond Cherry – C-RC

Natural Walnut
Add 20% to list



Natural Clear – W-NA

Walnut Finishes
The following stain is available, add 30% to list



Java – W-JA

HARDWOODS: All hardwood materials used in the manufacturing of seating products shall be Northern grown hardwoods. Hardwoods will be air and kiln dried to a moisture content of 5-7%. All hardwoods shall be of grade “A” material, free of material stains, imperfections, conformity of grain, texture and color. Hardwood species shall be Northern grown Red Oak, and Clear White Northern Maple.

FINISHING PROCEDURES: All materials shall be inspected and treated with a final sanding and polishing operation before any staining and final finishing can be performed. All machine and mill marks are to be removed. Once the polishing and sanding has been performed, the furniture will then undergo the following stain and finishing procedures:

Step 1: A base stain will be uniformly applied, wiped and then allowed to dry under factory controlled conditions.

Step 2: A uniform coat of sealer will be applied and allowed to dry.

Step 3: Sealer will be lightly sanded using 240 grit silicon paper.

Step 4: A catalytic lacquer of 34-45 degree sheen is evenly applied and allowed to dry under factory controlled conditions.

METAL FINISHING PROCEDURES: All metal components are thoroughly cleaned and coated electrostatically with an epoxy powder coat paint finish. The metal components are then oven baked and cured for a lasting finish.