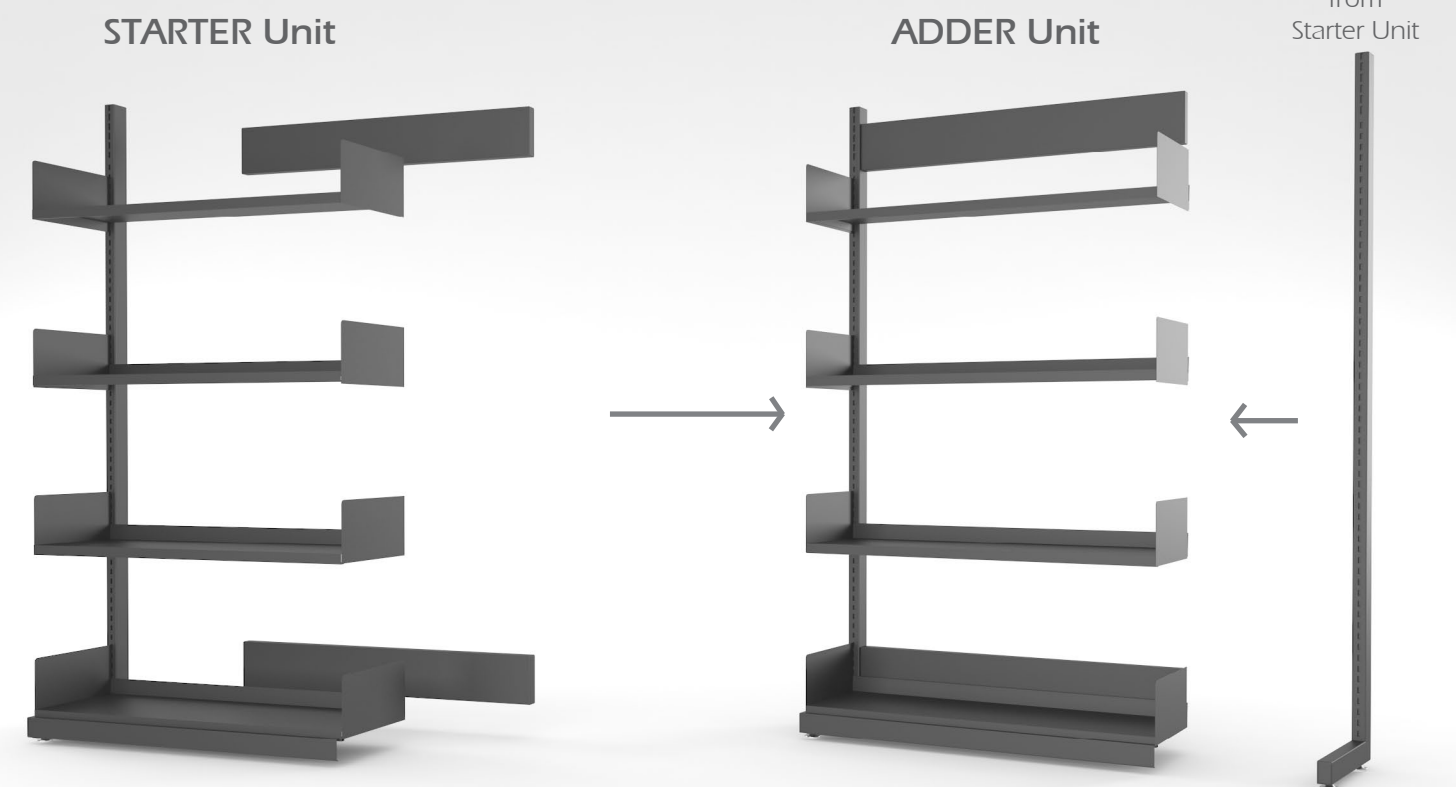


Trek Shelving



PALMIERI combines leading edge technology, attention to detail and premium quality materials to deliver a diverse range of shelving systems to enhance any library environment.



How to Order:

Begin with a **Starter Unit** and order **Adder Units** of the same height, depth, and width for additional bays in any shelving run. One Mid Panel is included with every Adder unit. The End Panel from the Starter unit will go at the end of the shelving run. *See image above.

Single Face vs. Double Face units:

Single face units must rest against a wall and/or be anchored to the floor or ceiling. Double face units may be freestanding and can go in the center of a room.

Specifications:

Units are made of a 1 1/4" x 2" metal frame which is finishes with powder coat paint. The unit also comes with Metal Shelves. Optional end panels are available at an additional charge.



Standard Low Back Shelving



Slotted Shelf

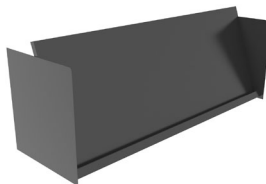


Magazine Shelving

Standard Shelf Options:



Low Back Metal Shelves - flanges on three sides; front flange is turned up and in (forming a triple bend) for additional support. Back is bent 90 degrees to form a 1 1/4" high book stop back



Metal Magazine Shelves - 1" high x 1" deep lip along the front edge to secure magazines. Shelves are mounted using standard retractable magazine shelf hardware



Slotted Shelves - 3 adjustable dividers each 5" high, which can be adjusted in increments of 2".

***Metal Shelves** can accommodate weight loads of **50 lbs./sq.ft.** without deflection in excess of 3/16".

Standard Color Options for METAL Shelves



Additional Options:



Metal Grooved Shelf



Media Shelf: Sloped



Media Shelf: Zig Zag Display



Media Shelf: New Display



Media Shelf: Hanging Bag Rod



Canopy Top Bracket



Upright Column Extender



Mobile Shelving

Shelving HEIGHTS:

42" 48" 66" 78" 84" 90"

Shelving WIDTHS:

24 3/4" 30 3/4" 36 3/4"

Shelving DEPTHS:

Single Face: 10" 12" 14" **Double Face:** 20" 24" 28"
Magazine Shelving units have a depth of 12"



PALMIERI's Trek Shelving collection assures excellence in both design and practical function. Join some of the most esteemed learning institutions and libraries, across North America, in making PALMIERI the choice for all your shelving needs.

PALMIER

1230 Reid Street
Richmond Hill
Ontario, Canada
L4B 1C4

T 905 731 9300
F 905 731 9878
TF 800 413 4440

info@palmierifurniture.com
www.PalmieriFurniture.com