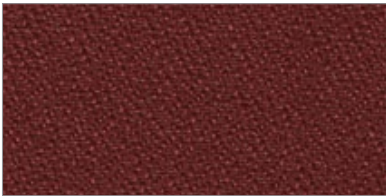
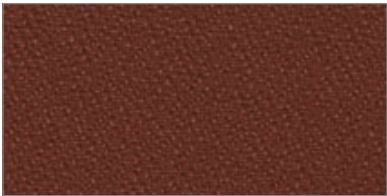




Red 14



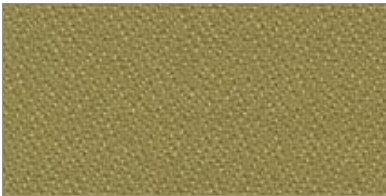
Burgundy 108



Terracotta 405



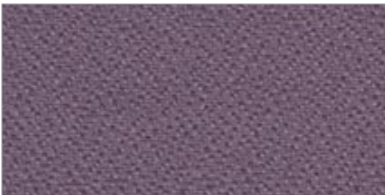
Gold 59



Eucalyptus 64



Green 208



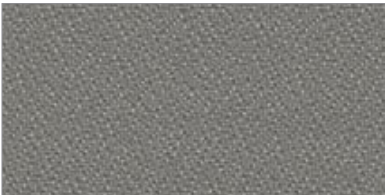
Purple 1009



Mist 32



Navy 308



Charcoal 908



Black 9009



Brown 87

CORNERBLOCK FABRIC SPECIFICATION:

Abrasion: Exceeds 420,000 Double Rubs.

Backing Content: 100% Acrylic

Cleaning Instruction: Solvent Cleaner.

Colors Available: 12 colors available.

Construction: Crepe

Content: 100% Polyester

Crocking: AATCC 8: Dry = Class 4.5 AATCC 8: Wet = Class 4.5

Description: Solid Crepe: Contract Rated

Fire Retardancy: California Bulletin 117-Section E, Motor Vehicle Safety Standard 302. NFPA 260 Class 1. UFAC Class 1

Pilling: Passes ASTM D3511 - Class 4.5

Protective Finish: Stain and Soil Resistant Finish

Railroaded Pattern: Non-Directional

Seam Slippage: Passes Seam Slippage ASTM D434.W 61 x F 66 LBF

Tear Strength: Passes ASTM D2261 - Warp = 54 lbs and Fill = 72 lbs.

Tensile Strength: Passes ASTM D5034 - Warp = 491 lbs and Fill = 364 lbs.

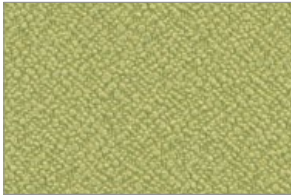
Ultraviolet: LIGHTFASTNESS IS 40 HOURS Colorfastness to Light AATCC16 Class 4.5

Weight: 11.06 ounces per square yard. 17.51 Ounces per Linear Yard

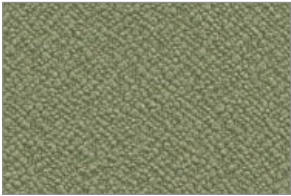
*To request large individual Sample Colors please visit www.jennisfabrics.com



Mellow 51



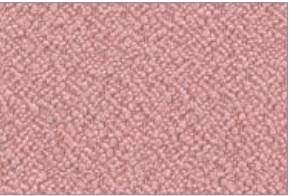
Key Lime 2005



Basil 2004



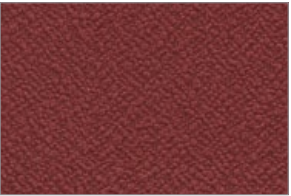
Thyme 27



Rose 1001



Fuchsia 1003



Salmon 104



Paprika 15



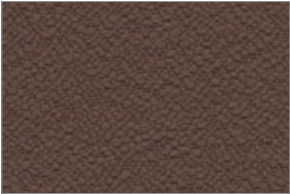
Snow 6001



Oyster 6009



Buff 66



Acorn 8006



Ice Blue 3006



Cobalt 35



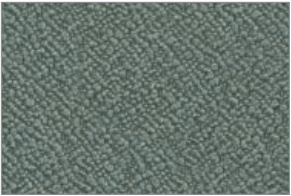
Grey 92



Onyx 9009



Port 17



Bay 39



Rust 46



Milk Chocolate 87



Truffle 8004

MONACO FABRIC SPECIFICATION:

Abrasion: Exceeds 200,000 Double Rubs.

Backing Content: 100% Acrylic

Cleaning Instruction: Water/Solvent Based Cleaner. Do not bleach

Colors Available: 21 colors available.

Construction: Crepe

Content: 100% Polyester

Description: Woven Solid

Fire Retardancy: California Bulletin 117-Section E, UFAC Class 1

Pilling: Passes ASTM D3512 - Class 4

Seam Slippage: Passes Seam Slippage ASTM D434. W 66 x F 71 LBF

Tear Strength: Passes ASTM D2261 - Warp = 10 lbs and Fill = 28 lbs.

Tensile Strength: Passes ASTM D5034 - Warp = 198 lbs and Fill = 304 lbs.

Ultraviolet: Colorfastness to Light AATCC16 Class 4.5

Weight: 11.31 Ounces per Linear Yard 383.0 grams per square meter. 7.40 ounces per square yard.

*To request large individual Sample Colors please visit www.jennisfabrics.com



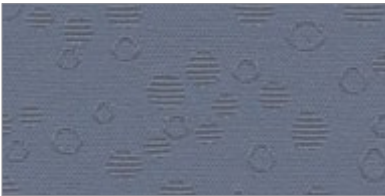
Gold 59



Eucalyptus 64



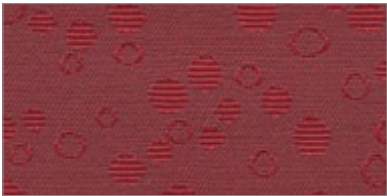
Green 208



Mist 32



Navy 308



Red 14



Burgundy 108



Taupe 6009



Brown 87



Charcoal 908



Black 9009

GRANULAR FABRIC SPECIFICATION:

Abrasion: Exceeds 50,000 Double Rubs.

Backing Content: 100% Acrylic

Cleaning Instruction: Water Based Cleaner.

Colors Available: 11 colors available.

Content: 100% Polyester

Crocking: AATCC 8: Dry = Class 4.5 AATCC 8: Wet = Class 4.5

Description: Contemporary Contract Woven Jacquard

Fire Retardancy: California Bulletin 117-Section E, NFPA 260 Class 1. UFAC Class 1

Pilling: Passes ASTM D3511 - Class 4.5

Repeat Length: 3.3 “(8.3cm) Up the Roll.

Repeat Width: 5.0“(12.7cm) Across the Roll.

Seam Slippage: Passes Seam Slippage ASTM D434. W 61 x F 56 LBF

Tear Strength: Passes ASTM D2261 - Warp = 18 lbs and Fill = 20 lbs..

Tensile Strength: Passes ASTM D5034 - Warp = 272 lbs and Fill = 165 lbs.

Ultraviolet: Colorfastness to Light

Weight: 6.19 ounces per square yard. 9.46 Ounces per Linear Yard

*To request large individual Sample Colors please visit www.jennisfabrics.com



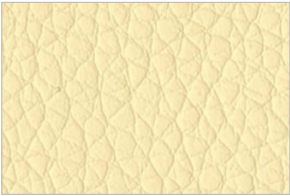
White 3822



Vanilla 61



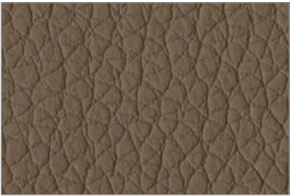
Cream 6003



Parchment 605



Sandstone 608



Mocha 808



Bisque 805



Earth 84



Chestnut 87



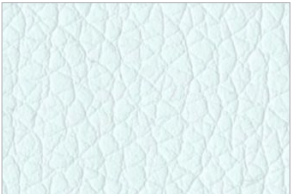
Chocolate 8020



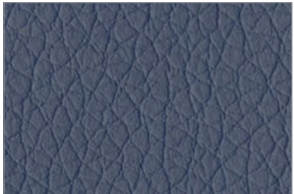
Chinchilla 6009



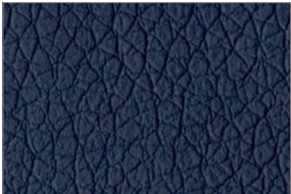
Black 9009



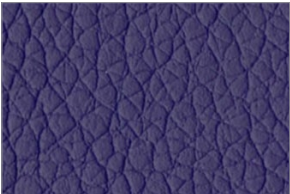
Lagoon 37



Pacific Blue 3003



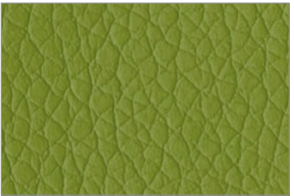
Navy 3006



Plum 1009



Citron 54



Sprig 205



Taupe 3948



Tan 802



Brick 11



Wine 108



Grey 9003



Steel 905



Rust 14



Garnet 17

TURNER VINYL SPECIFICATION:

Abrasion: Exceeds 500,000 Double Rubs.

Backing Content: 30% Cotton 70% Polyester

Cleaning Instruction: Water/Solvent Based Cleaner. Do not bleach

Cold Crack: Product Cold Crack is equal to or greater than -40 degrees Celsius (-40 Fahrenheit)

Colors Available: 26 colors available.

Construction: Vinyl

Content: 100% Polyurethane (PU)

Description: Simulated Leather Vinyl, Contract Rated

Eco Friendly: Eco-Friendly

Elongation: ASTM D5034: Warp: 23.4%, Fill: 38.1 %

Features: Phthalate Free Wipe with a soft cloth, with cold water and a mild soap. Dry immediately. PVC Free

Fire Retardancy: California Bulletin 117-Section E, Motor Vehicle Safety Standard 302. NFPA 260 Class 1. UFAC Class 1

Tear Strength: Passes ASTM D2261 - Warp = 20 lbs and Fill = 12 lbs.

Tensile Strength: Passes ASTM D5034 - Warp = 105 lbs and Fill = 74 lbs.

Ultraviolet: Colorfastness to Light AATCC16 Class 4.5

Weight: 14.12 ounces per square yard. 21.18 Ounces per Linear Yard

*To request large individual Sample Colors please visit www.jennisfabrics.com